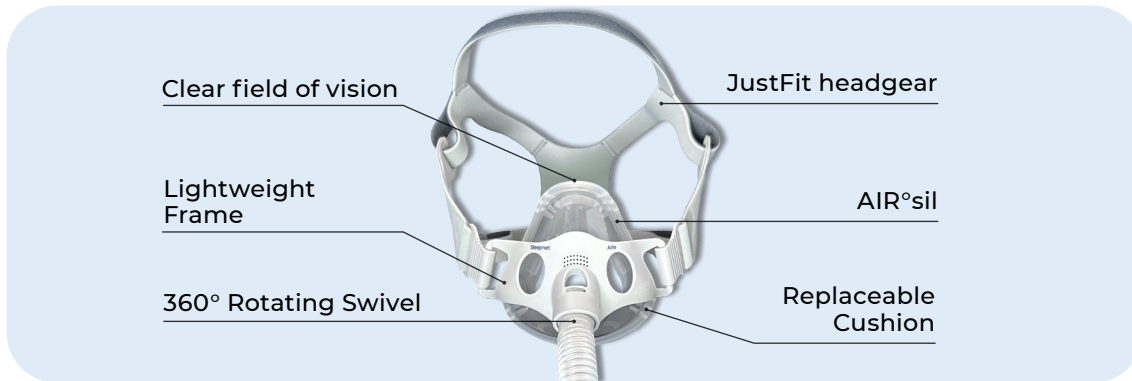
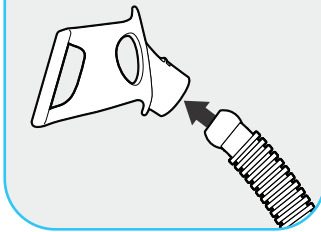


# Arie Full Face Mask

## Quick Start Guide



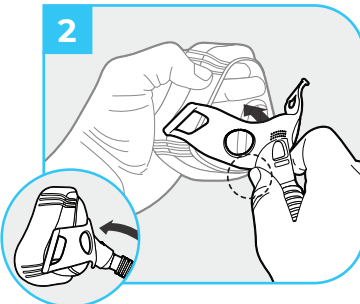
1



### Assembly

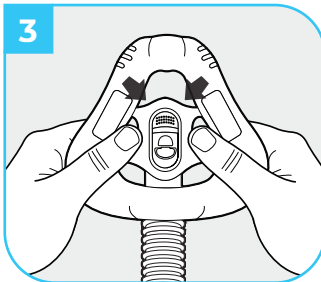
To assemble the mask, insert the top of the tube into the hole at the front of the mask frame.

2



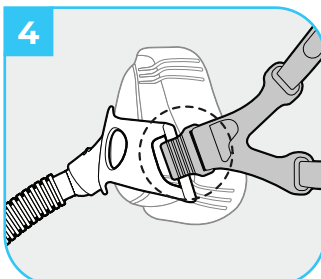
Insert the mask frame into the mask cushion from the bottom to the top. Snap the frame into the mask by pushing both together.

3



Run your fingers along the connection to ensure the frame is flush with the mask cushion.

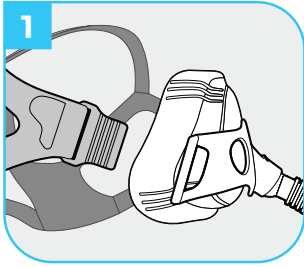
4



Connect the headgear clips to the mask frame by hooking the clips to the frame bars on the sides of the mask. Ensure the clips snap in securely.

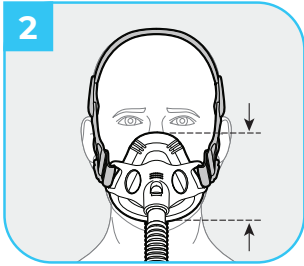
# Arie Full Face Mask

## Quick Start Guide

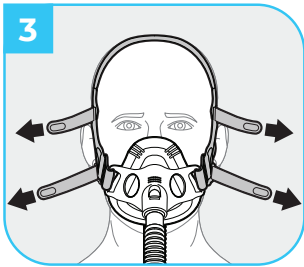


### Fitting

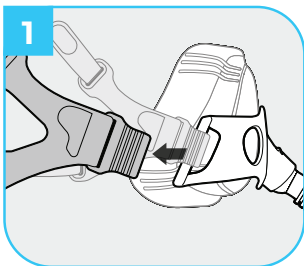
If you are a first-time user, start by putting on the mask in front of a mirror. Next, detach one headgear clip from the frame.



Slip the headgear over your head, then reattach the headgear clip. Place the mask in the correct position on your face with the bottom of the cushion resting on your chin just below your lip. The top of the cushion should rest beneath the bridge of your nose.

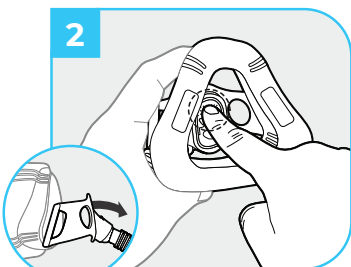


Tighten the top and bottom straps on both sides of the headgear so that the mask creates a snug seal on your face. Continue adjusting the mask until you achieve a comfortable seal. Do not overtighten the headgear.

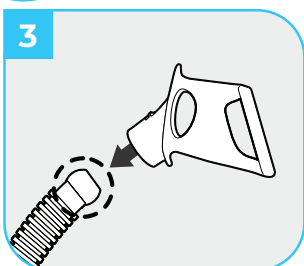


### Disassembly

Unhook the headgear clips from each side of the mask frame.



To remove the frame, gently push the top from inside while holding the cushion with your other hand.



Remove the tube from the mask frame. Grip and pull from the cuff to avoid stretching or damage.